

# Burnham Court

---

Sheltered Housing in Malmesbury

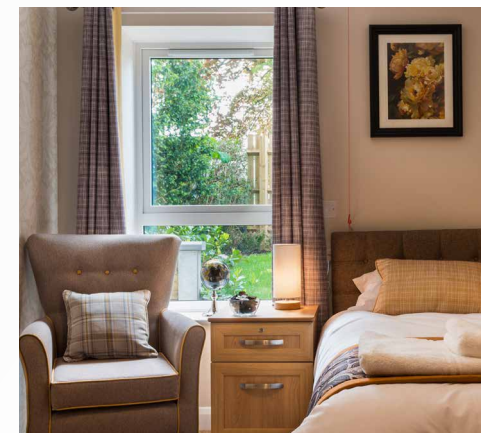


## Welcome to Burnham Court

Set in the picturesque market town of Malmesbury in Wiltshire, our home scheme caters for those who want to live later life in a modern, safe, secure and lively setting.

We offer a home from home experience and our staff are crucial to creating this homely, friendly and welcoming environment.

Burnham Court offers a range of modern, well equipped and self-contained apartments in a vibrant, community-led development. We provide a wide range of services, facilities and resident-led clubs and activities.

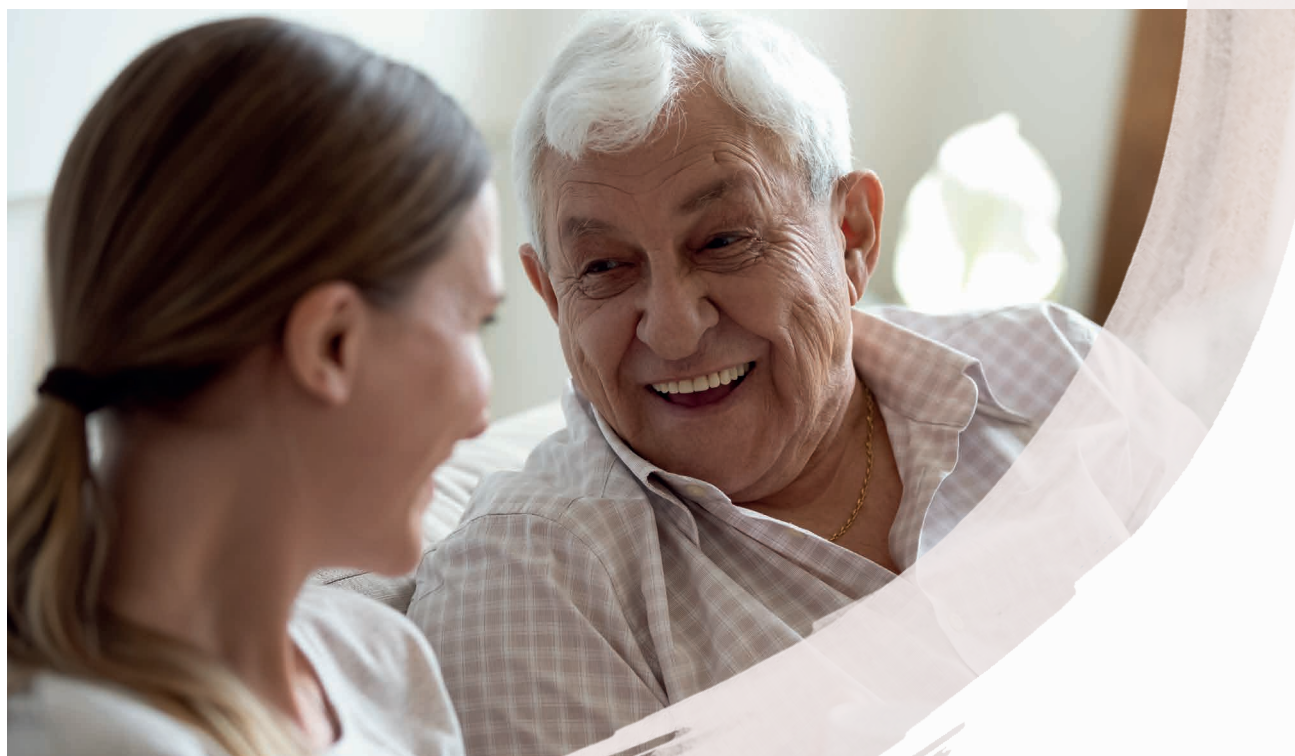


## Happiness starts with you

We believe in enjoying later life and will always offer you the opportunity to get involved in activities and entertainment – which is a big part of life in our houses.

At Burnham Court, we have a great range of facilities offering plenty of opportunities to pursue personal interests and to enjoy the company of others – with family and friends both old and new, as well as the wider local community.

**“I’m still part of my local community and have a whole new one at the same time.”**



## Your retirement

When you live with us, you are part of our community and the wider local community too.

Our professional staff team are supported by a number of committed volunteers. Some just want to spend time with you and pop in for a cup of tea and a chat, whereas others get involved in the day-to-day life of our scheme.

We have established connections with people in our local community who offer varied conversation and a chance to compare different experiences. Variety is the key to any community and we're very proud to offer this at Burnham Court.

## Your home from home

Thoughtfully designed and beautifully finished, our two-bed and one-bed apartments, some with outdoor space, are well placed to support a vibrant community of like-minded people who value their independence.

Each apartment provides quality living accommodation, including a private entrance, kitchen, lounge and dining room combined, and a bathroom with a level access shower. Mobility scooter storage is available on the ground floor.

In addition, the scheme offers a guest suite for visiting family and friends for a nightly fee.



## Your safety and quality assurance

Burnham Court provides a safe environment with a dedicated team – offering true peace of mind.

The secure, remote intercom system for visitors ensures a safe and secure environment for our residents and ensures that help is just a call away.

**“These aspects of life at Burnham Court sets us apart from other providers.”**



## The Abbeyfield Promise:

### Time to enjoy life

Making time for you is at the heart of everything we do.

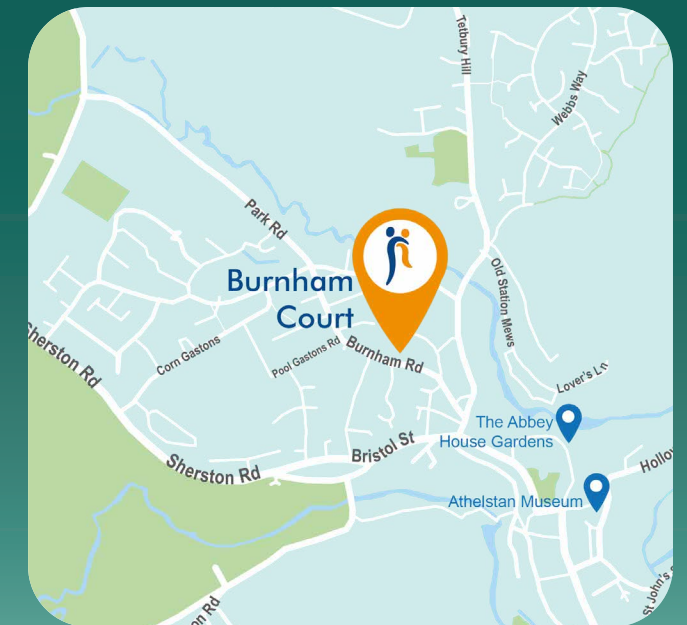
Our promise means that your time is well spent on the things that matter; lasting friendships, understanding your individual needs and making every day fulfilling - so that you feel valued, content, cared for and safe.

## Your community

Burnham Court is located in the heart of Malmesbury, in Wiltshire.

With its large variety of shops, restaurants and pubs, there is always plenty to do in the historic market town. Malmesbury Abbey and the Abbey House Gardens are a tourist favourite and the town offers a great base for exploring the wider Cotswolds.

Good transport links via bus and road are nearby, should you wish to explore further.





# Please do get in touch

Whether you're considering Burnham Court for yourself or a family member, whether you've just started exploring options or are ready to take the next step, we are here to talk.

Call us on **01666 825582**

Email us at **[Malmesbury.Burnham@abbeyfield.com](mailto:Malmesbury.Burnham@abbeyfield.com)**

## **Burnham Court**

Hodge Lane, Malmesbury, Wiltshire, SN16 0FN

**[www.abbeyfieldliving.org.uk](http://www.abbeyfieldliving.org.uk)**

Registered in England and Wales, Company 574816, Charity 200719, RSH No. H1046  
Abbeyfield Living Society is a trading name of The Abbeyfield Society